

# Newsletter



Annette Fox Leukaemia Research Fund

Registered Charity No. 516208

Autumn 2013

## 3rd ANNUAL FUN DAY – Wibsey Rugby Club



August Bank Holiday Weekend, Wibsey Rugby Club Playing Fields was the venue for this year's Annual Family Fun Day and Donkey Derby. Hundreds of people came along to join in the fun, ride the donkeys, browse around the stalls, watch the rugby tournaments or simply sit in the sunshine with a cold drink.

The Fun Day raised over £3,000 and we would like to say a huge thank you to everyone involved in the organising of the event, Wibsey Rugby Club for their much appreciated support, all the stall holders, the gorgeous Stonehill Donkeys and everyone who came along on the day in support of the charity.



CONTENTS	
3 <sup>rd</sup> Annual Fun Day	1
We Need Your Help	1
Just Text Giving	1
Donation	1
Fundraisers	2
Runners	2
Funding	2
JustGiving	2
Celebration & Remembrance Service	3
Smokie Dinner Dance	3
Merchandise	3
2013 Christmas Cards	4
2014 Calendars	4

**JustTextGiving™**  
by **vodafone**

An easy and quick way of making donations is to send a simple text message.

Text AFOX22 to 70070 and the amount you would like to donate, either £1, £2, £3, £4, £5 or £10.

We receive 100% of your donation!

## We Need Your Help

- As well as monetary donations, we are always grateful for good quality items which we can sell or use as raffle prizes.
- Have you thought about asking your local shop / hairdresser / pub to put a collection tin on their counter? Or perhaps you could have one at home to collect loose change - every penny really does count!
- You could collect used stamps and send them into the office (address at the bottom of the page 4)
- Maybe you could organise your own fundraising event, we have various ways in which we can help and support you - just give Michelle a call (01274 364168).
- You could attend one of our forthcoming events, keep your eye on our website and facebook page as well as our newsletters for details of future events - and don't forget to bring your friends along too.

### DONATION

Thank you to Rob Nield and staff at TK Maxx, Forster Square, Bradford, for donating £1000 to the Charity.



# Fundraisers

The Annette Fox Leukaemia Research Fund is extremely grateful to everyone who fundraises on our behalf or organises their own fundraising event. These are just a handful of our much valued supporters.

## Bradford St James's Market Tenants Association

Thank you to Jonathan Kershaw, President of the Bradford St James's Market Tenants Association and everyone else involved in organising and supporting their Annual Charity Dinner. For the third year in a row, the Fund has been chosen to benefit from this extremely successful event. This year's Charity Dinner raised a fantastic £19,517.56 – bringing the total raised over 3 years to an incredible £46,017.56.

## Family Fun Day

Thank you to Jan Greenwood for organising a Family Fun Day at East Bowling Sports & Social Club on 20<sup>th</sup> July 2013 and raising £650

## Birthday Fundraising

Some of our kind supporters choose to ask for donations to the Fund instead of birthday gifts. Belated 50<sup>th</sup> birthday wishes to Josie Buckley who raised £500 in this way, and belated 70<sup>th</sup> birthday wishes to Trevor Constantine who raised £270.



## RUNNERS

A big thank you to everyone who put on their running shoes over the summer and took part in various events around the country, raising sponsorship and also the profile of the charity.

Thank you to Faye Halliday and her grandfather, Malcolm Farrar, for taking part in the Leeds 10k and raising £846 – for which Faye received match funding from her employer, Stepchange Debt Charity, bringing their total to £1,692.

Thank you also to Shirley, Kevin, Mark, Neil, Tracy, Colleen and Steve who took part in the York 10k and raised £1,115.50 between them - and to all those who travelled on the bus to York as supporters to cheer them on. If you would like to join them next year (3/8/14) and have a great day out while raising money for the Charity, please contact Michelle in the office for more information.

---

## Funding

The Annette Fox Leukaemia Research Fund has, with your help, recently purchased new lockers and adjustable tables for each of the beds on Ward 7, to complete the newly decorated rooms.

We have also provided over £3,000 in Grants since April 2013 and continue to fund an Aromatherapist for Ward 7 and a Clinical Nurse Specialist.

All this is made possible by the generosity and support of individuals and organisations who donate or fundraise on our behalf.

---

Many of our supporters now choose JustGiving as a way of raising funds. They can set up their own fundraising page which they then e-mail to all their friends and colleagues and can also share on facebook and twitter. Donations are then made online, the money is automatically gift aided (an extra 25% on top of the donation) and transferred to our bank account. Simple!

**JustGiving**

For step by step instructions on how to set up a fundraising page, to view other fundraisers pages and see the challenges they have set themselves, to make a donation or for further information go to [www.justgiving.com/aflr](http://www.justgiving.com/aflr)

# Forthcoming Events

## *Annette Fox Service Of Celebration and Remembrance*

**1<sup>st</sup> December 2013 – Victoria Hall, Saltaire**

Doors open at 10.30 am and the service will start at 12.00 noon.

Everyone is welcome to come along to this special service and celebrate or remember the life of a loved one. Entrance to the service is via ticket only, however there is no cost per ticket, all we ask is a donation to the Charity when booking your seats.

Special gift tags are available for you to write a personal message on and these will be hung on our Christmas tree at Victoria Hall, these can be viewed by everyone throughout the day. During the service there will also be a roll call of names of the people whose life is being celebrated or remembered at the service by family and friends.

A choir will lead the singing of Christmas Carols, accompanied by Godfrey Nield on the Wurlitzer Theatre Pipe Organ.

There will also be plenty of time before the service to browse around the various stalls which will be selling Christmas Cards and seasonal gifts. A café will be open where you can relax with a cup of tea or coffee and perhaps some homemade cake or a mince pie.

For more information or to request a booking form please contact Michelle Adam on 01274 364168



## **22nd Gala Dinner Dance**

Friday 7<sup>th</sup> February 2014

CEDAR COURT HOTEL, BRADFORD

**Come and join us for an amazing night out with one of Bradford's best loved bands and help raise funds for the Annette Fox Leukaemia Research Fund**

**The evening starts at 7.00pm**

**Tickets on sale now at £50 each**

**Special rates on tables of 10 at just £450 and tables of 12 just £550**

Special Room Rates of £55b&b Single and £65b&b Double  
ample free parking on site

For further details, or to request a booking form, please contact Michelle Adam, Ward 7, Bradford Royal Infirmary on 01274 364168  
Or e-mail [michelle.adam@bthft.nhs.uk](mailto:michelle.adam@bthft.nhs.uk)

## **MERCHANDISE**



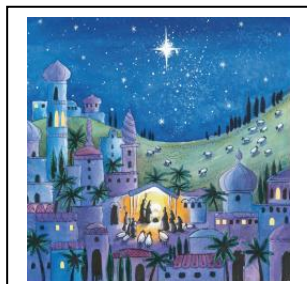
### **NOW ON SALE**

- T-shirts* - £8
- Eco-Bag* - £2
- Wristbands* - £1
- Mints* - £1
- Pens* - £1
- Post-It Notes* - £1





# 2013 Christmas Cards



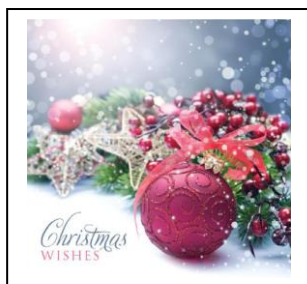
"Bethlehem"



"Silver Bauble"



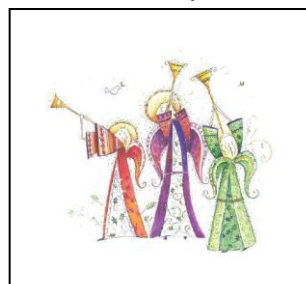
"Santa's Toy Sack"



"Christmas Arrangement"



"Village Glow"



"Hark The Herald"



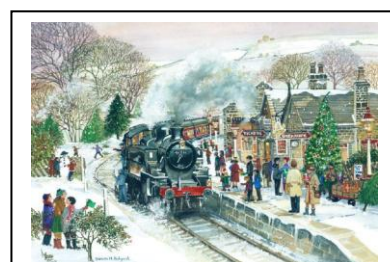
"Patient Snowman"



"Curious Donkeys"



"By The Fire"



"Waiting For The Train"

£2.99 per pack of 10  
(one design in each pack)

Cards can be purchased from our office on Ward 7 (Monday, Wednesday, Thursday and Friday).  
Orders can also be placed by telephone, please call Michelle on 01274 364168  
or e-mail [michelle.adam@bthft.nhs.uk](mailto:michelle.adam@bthft.nhs.uk)

SIZES: Bethlehem, Christmas Arrangement, Santa's Toy Sack, Village Glow, Silver Bauble, Hark The Herald  
All measure 160mm x 160mm

Patient Snowman, Curious Donkeys, By The Fire, Waiting For The Train  
All measure 216mm x 152mm

**ALL CARDS FALL INTO THE LOWEST ROYAL MAIL PRICE BAND**

---

## 2014 Calendars

A beautiful full colour, glossy calendar, featuring our very own mascot, Mr Fox, out and about around the local area, visiting some of the regions famous landmarks.

Available to buy from our office - only £4.99 each

---

**Annette Fox Leukaemia Research Fund**  
**Ward 7, Bradford Royal Infirmary, Duckworth Lane, Bradford, BD9 6RJ**  
Tel/Fax: 01274 364168 e-mail: [annette.fox@bthft.nhs.uk](mailto:annette.fox@bthft.nhs.uk) [www.annettefox.co.uk](http://www.annettefox.co.uk)